

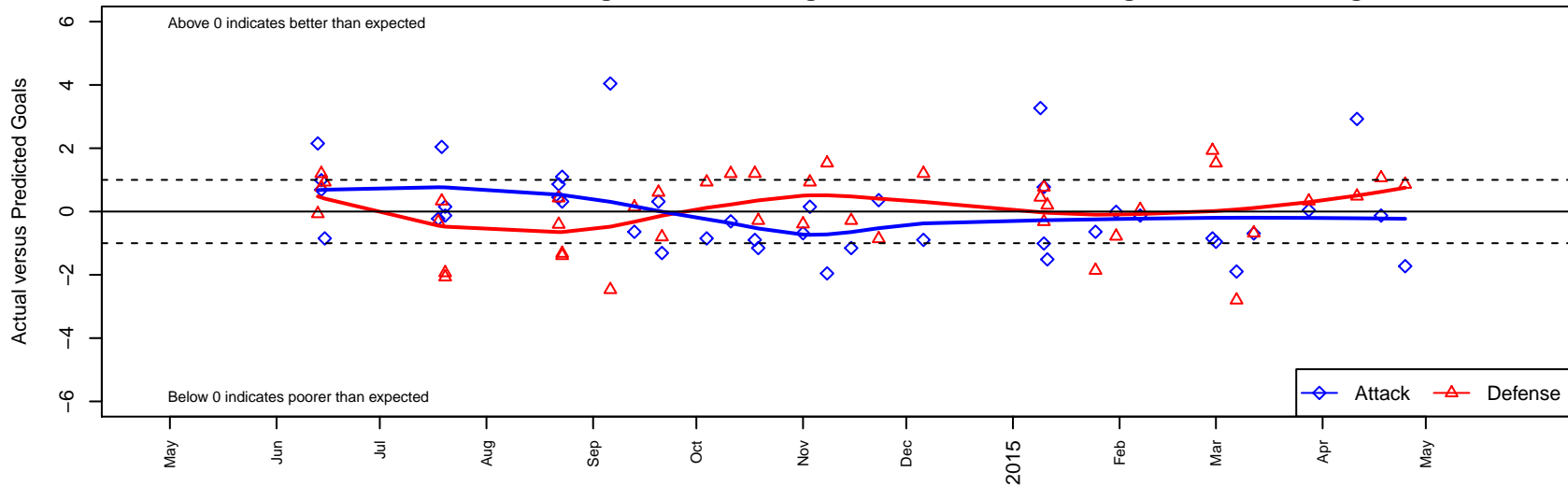
Crossfire Premier C B02

Crossfire Premier SC
 Redmond, WA
 B02 total strength=781
 attack=0.92 defense=0.95
 fall league = RCL B02 Div 2
 spr league = Win RCL B02 Div 2
 notes= Raferty 2013, 2014

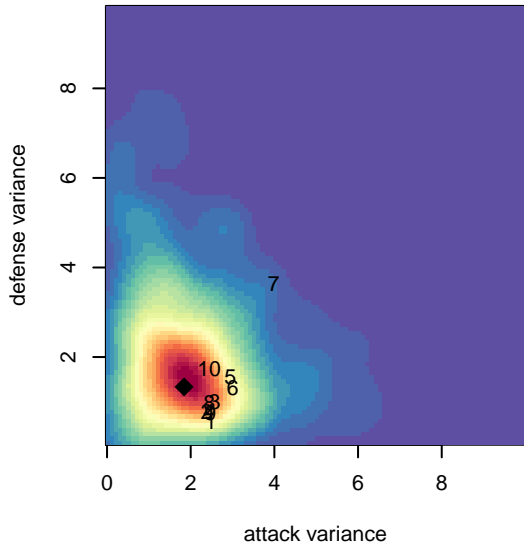
alt names used:
 CROSSFIRE PREMIER BOYS U 12 C-- RAFTE
 Crossfire Premier BU12 C - Raftery
 CROSSFIRE PREMIER B02 C - RAFTERY (W
 Crossfire Premier B02-Raftery-C
 Crossfire Premier BU12 C - Raftery
 Crossfire Premier B02-Raftery-C
 Crossfire Premier B02-Raftery-C

Venues played:
 2014 Rainier Challenge Copa U12
 2014 Nike Crossfire Challenge Silver U12
 2014 REDAPT Cup Gold U12
 2014 RCL B02 Div 2
 2014 PacNW Winter Classic Premier II U12
 2014 Win RCL B02 Div 2
 2014 WYS Presidents Cup B02 Division 1

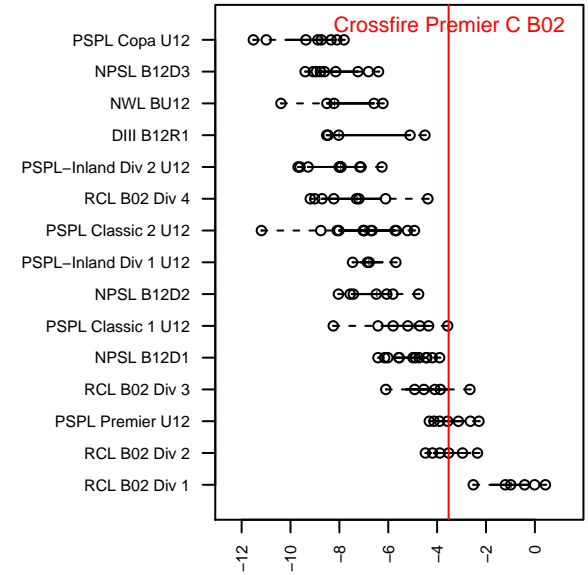
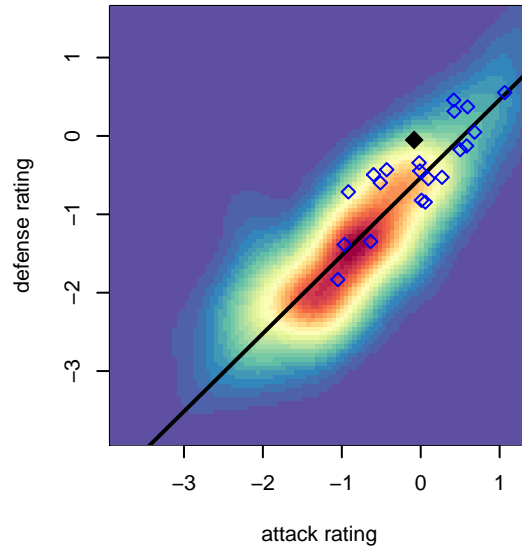
Crossfire Premier C B02
 Dots are actual minus expected GF (blue circles) and GA (red triangles).
 Blue line is smoothed change in attack strength. Red is smoothed change in defense strength.



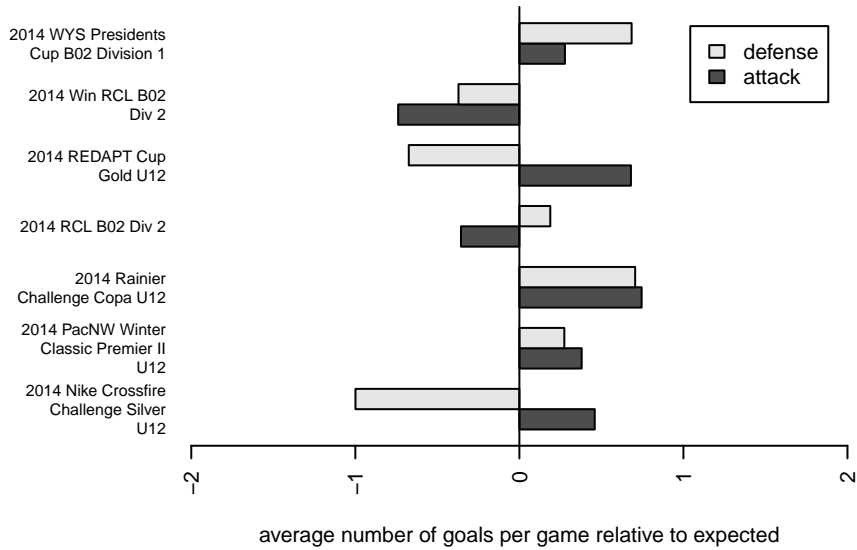
**attack and defense variance (black dot)
relative to other teams
and top 10 in region**



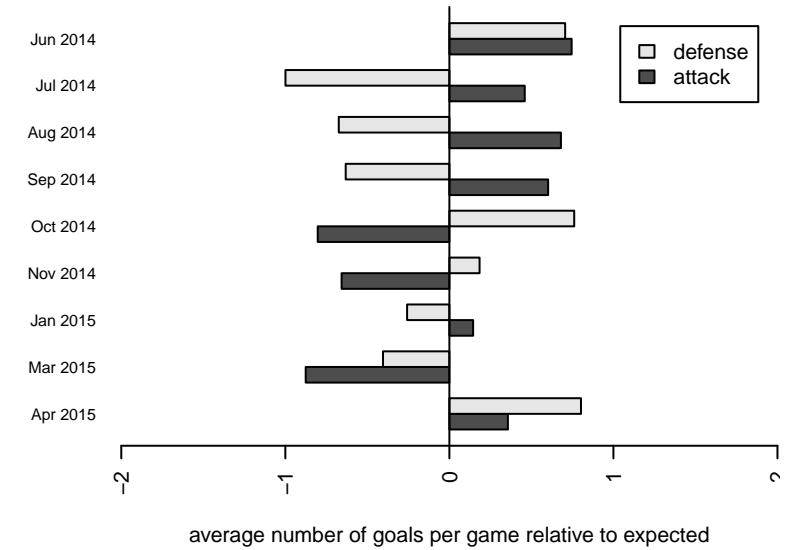
**attack and defense rating
relative to others at age
and all opponents in last 13 months**



Performance relative to 13 month average



Performance relative to 13 month average



| date | home | | away | | venue | pred.home | pred.away |
|------------|--------------------------|---|----------------------------|---|--|-----------|-----------|
| 2015-04-25 | FWFC Blue B02 | 0 | Crossfire Premier C B02 | 0 | 2014 WYS Presidents Cup B02 Division 1 | 0.86 | 1.73 |
| 2015-04-18 | Crossfire Premier C B02 | 1 | SSC Shadow A B02 | 1 | 2014 WYS Presidents Cup B02 Division 1 | 1.13 | 2.06 |
| 2015-04-11 | WA Rush B02 | 0 | Crossfire Premier C B02 | 5 | 2014 WYS Presidents Cup B02 Division 1 | 0.48 | 2.08 |
| 2015-03-28 | Crossfire Premier C B02 | 2 | Slammers Orange B02 | 1 | 2014 WYS Presidents Cup B02 Division 1 | 1.96 | 1.33 |
| 2015-03-12 | Crossfire Premier A B03 | 4 | Crossfire Premier C B02 | 0 | 2014 Win RCL B02 Div 2 | 3.32 | 0.69 |
| 2015-03-07 | FC Alliance B B02 | 4 | Crossfire Premier C B02 | 0 | 2014 Win RCL B02 Div 2 | 1.20 | 1.90 |
| 2015-03-01 | Crossfire Premier C B02 | 1 | Snohomish United Black B02 | 0 | 2014 Win RCL B02 Div 2 | 1.96 | 1.53 |
| 2015-02-28 | Crossfire Premier C B02 | 0 | Crossfire Premier B B02 | 0 | 2014 Win RCL B02 Div 2 | 0.85 | 1.93 |
| 2015-02-07 | SSC Shadow A B02 | 2 | Crossfire Premier C B02 | 1 | 2014 Win RCL B02 Div 2 | 2.06 | 1.13 |
| 2015-01-31 | Crossfire Premier C B02 | 1 | NWN Red B02 | 3 | 2014 Win RCL B02 Div 2 | 1.01 | 2.22 |
| 2015-01-25 | Crossfire Premier C B02 | 1 | Eastside FC White B02 | 3 | 2014 Win RCL B02 Div 2 | 1.64 | 1.14 |
| 2015-01-11 | Harbor Premier Green B02 | 1 | Crossfire Premier C B02 | 0 | 2014 PacNW Winter Classic Premier II U12 | 1.20 | 1.51 |
| 2015-01-10 | WPFC White B02 | 0 | Crossfire Premier C B02 | 1 | 2014 PacNW Winter Classic Premier II U12 | 0.77 | 2.01 |
| 2015-01-10 | Crossfire Premier C B02 | 2 | WA Rush Nero B02 | 1 | 2014 PacNW Winter Classic Premier II U12 | 1.23 | 0.68 |
| 2015-01-09 | Crossfire Premier C B02 | 9 | PacNW White B02 | 0 | 2014 PacNW Winter Classic Premier II U12 | 5.73 | 0.45 |
| 2014-12-06 | FC Alliance B B02 | 0 | Crossfire Premier C B02 | 1 | 2014 RCL B02 Div 2 | 1.20 | 1.90 |
| 2014-11-23 | Crossfire Premier C B02 | 2 | Eastside FC White B02 | 2 | 2014 RCL B02 Div 2 | 1.64 | 1.14 |
| 2014-11-15 | 3 Rivers Black B02 | 2 | Crossfire Premier C B02 | 0 | 2014 RCL B02 Div 2 | 1.72 | 1.15 |
| 2014-11-08 | Crossfire Premier C B02 | 0 | Snohomish United Black B02 | 0 | 2014 RCL B02 Div 2 | 1.96 | 1.53 |
| 2014-11-03 | Crossfire Premier B B02 | 1 | Crossfire Premier C B02 | 1 | 2014 RCL B02 Div 2 | 1.93 | 0.85 |
| 2014-11-01 | Seattle United Tango B02 | 2 | Crossfire Premier C B02 | 0 | 2014 RCL B02 Div 2 | 1.61 | 0.69 |
| 2014-10-19 | Crossfire Premier C B02 | 0 | 3 Rivers Black B02 | 2 | 2014 RCL B02 Div 2 | 1.15 | 1.72 |
| 2014-10-18 | Crossfire Premier C B02 | 1 | FC Alliance B B02 | 0 | 2014 RCL B02 Div 2 | 1.90 | 1.20 |
| 2014-10-11 | PacNW Blue B02 | 0 | Crossfire Premier C B02 | 2 | 2014 RCL B02 Div 2 | 1.20 | 2.31 |
| 2014-10-04 | Crossfire Premier C B02 | 0 | Crossfire Premier B B02 | 1 | 2014 RCL B02 Div 2 | 0.85 | 1.93 |
| 2014-09-21 | Crossfire Premier C B02 | 1 | PacNW Blue B02 | 2 | 2014 RCL B02 Div 2 | 2.31 | 1.20 |
| 2014-09-20 | Crossfire Premier C B02 | 1 | Seattle United Tango B02 | 1 | 2014 RCL B02 Div 2 | 0.69 | 1.61 |
| 2014-09-13 | Eastside FC White B02 | 1 | Crossfire Premier C B02 | 1 | 2014 RCL B02 Div 2 | 1.14 | 1.64 |

| date | home | | away | | venue | pred.home | pred.away |
|-------------|----------------------------|---|----------------------------|---|--|------------------|------------------|
| 2014-09-06 | Snohomish United Black B02 | 4 | Crossfire Premier C B02 | 6 | 2014 RCL B02 Div 2 | 1.53 | 1.96 |
| 2014-08-23 | Crossfire Premier C B02 | 2 | Normandy Park FC White B02 | 3 | 2014 REDAPT Cup Gold U12 | 0.90 | 1.68 |
| 2014-08-23 | Crossfire Premier C B02 | 1 | Seattle United Tango B02 | 3 | 2014 REDAPT Cup Gold U12 | 0.69 | 1.61 |
| 2014-08-22 | Crossfire Premier C B02 | 4 | Blackhills FC Black B02 | 1 | 2014 REDAPT Cup Gold U12 | 3.55 | 0.59 |
| 2014-08-22 | Crossfire Premier C B02 | 5 | Silver Lake Bombers B02 | 0 | 2014 REDAPT Cup Gold U12 | 4.14 | 0.43 |
| 2014-07-20 | SSC Shadow A B02 | 4 | Crossfire Premier C B02 | 1 | 2014 Nike Crossfire Challenge Silver U12 | 2.06 | 1.13 |
| 2014-07-20 | Crossfire Premier B B02 | 4 | Crossfire Premier C B02 | 1 | 2014 Nike Crossfire Challenge Silver U12 | 1.93 | 0.85 |
| 2014-07-19 | Slammers Orange B02 | 1 | Crossfire Premier C B02 | 4 | 2014 Nike Crossfire Challenge Silver U12 | 1.33 | 1.96 |
| 2014-07-18 | WA Rush Nero B02 | 1 | Crossfire Premier C B02 | 1 | 2014 Nike Crossfire Challenge Silver U12 | 0.68 | 1.23 |
| 2014-06-15 | Crossfire Premier C B02 | 0 | Crossfire Premier B B02 | 1 | 2014 Rainier Challenge Copa U12 | 0.85 | 1.93 |
| 2014-06-14 | Crossfire Premier C B02 | 3 | PacNW Blue B02 | 0 | 2014 Rainier Challenge Copa U12 | 2.31 | 1.20 |
| 2014-06-14 | WPFC White B02 | 0 | Crossfire Premier C B02 | 3 | 2014 Rainier Challenge Copa U12 | 0.77 | 2.01 |
| 2014-06-13 | Crossfire Premier B B02 | 2 | Crossfire Premier C B02 | 3 | 2014 Rainier Challenge Copa U12 | 1.93 | 0.85 |